

INTRODUCTION

There are a number of ways to allow Linux clients the ability to print through your printer, however sometimes the best and most workable method is not clear. This article is designed to provide an overview of the options available when printing from Linux, via shared printers on a Windows Server.

WHAT IS CUPS?

CUPS was originally an acronym for Common Unix Printing System, and over the years has officially become simply *CUPS*. It is natively a print spooling platform used for the Internet Printing Protocol on Linux and Unix systems. It also includes support for printing via Line Printer Daemon (LPD) and Server Message Block (SMB via SAMBA) protocols. Running this powerful daemon opens the door to a variety of printing options on Linux.

**Daemon* is a computer term coined originally for Unix systems referring to background processes that remained running to provide a service.

METHODS AVAILABLE

There are a several methods of allowing the use of Windows Server shared printers, to your Linux clients. Below is a summary of two methods covered within this article.

Printing via LPD (Line Printer Daemon)

This is typically the easiest, and most typical option available.

Primary Advantages / Disadvantages:

- Submits print job as the user logged in and printing
- Print Job submission includes document title
- Simple setup and installation of printer
- Lacks common authentication issues that can occur when attempting to use SAMBA

Printing via Windows Print Sharing (SMB):

This printing allows connection straight to the Windows Share and has the best integration with Active Directory, though in some cases can be difficult to support. It uses SAMBA to implement connection to Windows File and Print Sharing.

Primary Advantages / Disadvantages:

- All print jobs get submitted as the user that initially installed the printer, rather than the user actually printing
- Slightly more complex installation
- Print job submission does not include document title
- Windows credentials are stored in clear text as part of the Device URI (defined later in this guide)



Software Shelf International, Inc.
PO Box 7343
Menlo Park, CA 94026 USA
Phone: 650-521-5275
Sales: sales@softwareself.com
Support: support@softwareself.com

OBTAINING & INSTALLING CUPS

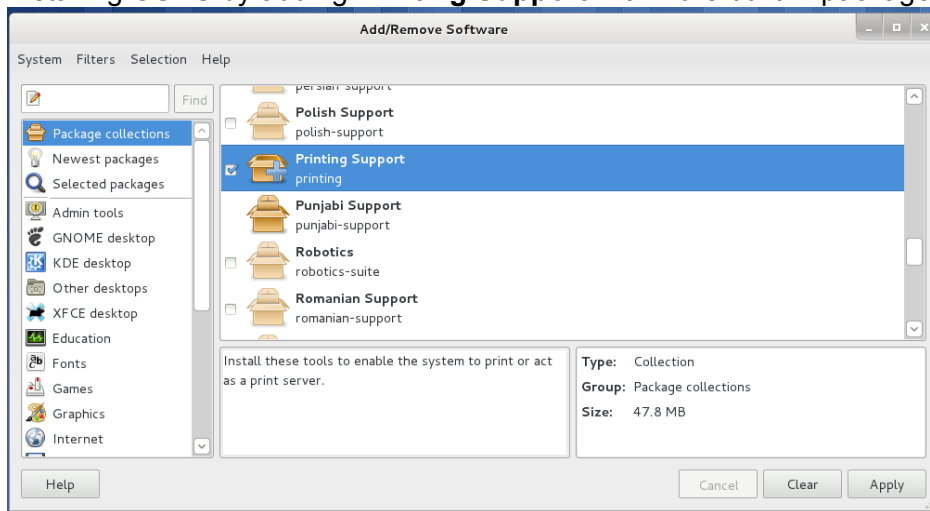
There are usually several methods available for obtaining and install CUPS on your Linux system. Below is a summary of each.

Included with Distribution:

Most Linux distributions include CUPS, and it is often even preinstalled during a typical installation. In some cases you may need to manually enable or install it from within the user interface. Some flavors have become so simplified; installing CUPS may not even be labeled “CUPS”.

Example:

Installing CUPS by adding **Printing Support** within the built in package collections on **Fedora 15**



Downloading & Installing an RPM:

If CUPS is not included, and is not easily installable via the built in packages, then the RPM file for CUPS can usually be downloaded and installed from your distribution’s support site, and possible other third party sites. It is important when locating and downloading, to take two things into consideration:

- Do I have all of the pre-requisite packages downloaded and installed?
(Common pre-requisites include: gcc, libjpeg, libjpeg-devel, libpng, and many, many more. See www.cups.org for a complete pre-requisite list)
- Am I downloading the correct package for my version and architecture?
(i.e. 0x86 or 0x64? Linux kernel version?)

Downloading & Compiling the Source:



Software Shelf International, Inc.
PO Box 7343
Menlo Park, CA 94026 USA
Phone: 650-521-5275
Sales: sales@softwareshelf.com
Support: support@softwareshelf.com

A final option is download, compile and install the source code directly downloaded from www.cups.org. This option requires much more advanced Linux and development knowledge, and is beyond the scope of this guide.

INTRODUCTION TO THE CUPS ADMINISTRATOR:

The modern CUPS administrator uses a Web UI and has become increasingly easy and intuitive to use. The below provides a brief introduction to logging in and mentions the areas we will be using in this guide.

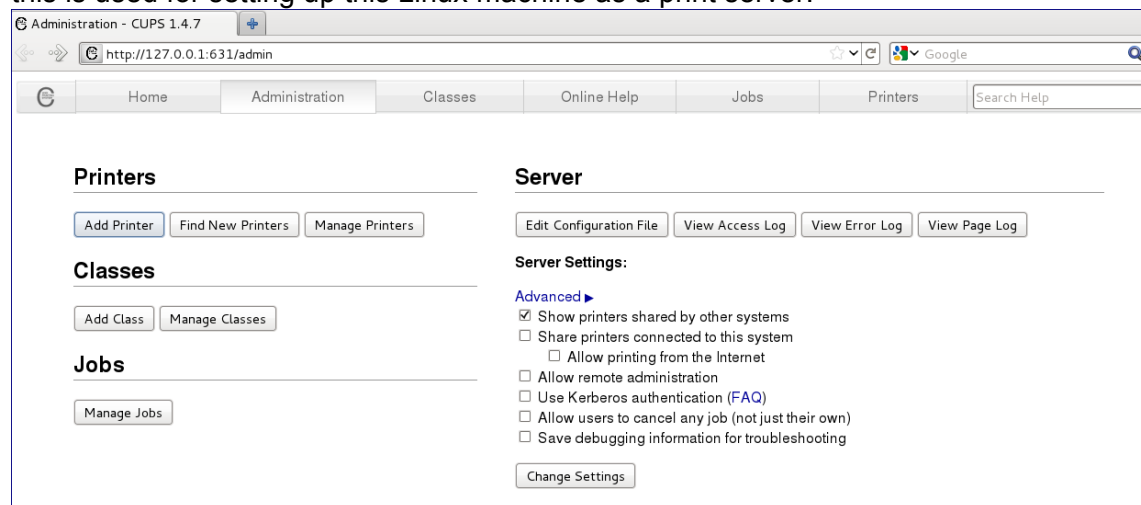
The CUPS Web UI:

The user interface for cups is accessed via an internet browser using the following url. You may be required to provide root access before accessing this, or making any sensitive changes.

http://127.0.0.1:631

After entering the address, a web page should load allowing for easy administration. The section will be focusing on is limited to **Printers**.

The **Server** section should not be confused with anything used to print through your Windows server, this is used for setting up this Linux machine as a print server.



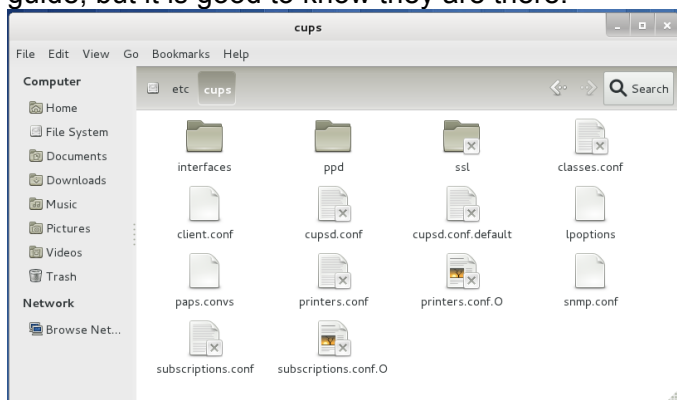
The CUPS Configuration Files:

Your CUPS settings, configuration and drivers are all located within the /etc/cups directory. The primary configuration file is named cupsd.conf. Manually editing these files is beyond the scope of this



Software Shelf International, Inc.
PO Box 7343
Menlo Park, CA 94026 USA
Phone: 650-521-5275
Sales: sales@softwareshelf.com
Support: support@softwareshelf.com

guide, but it is good to know they are there.

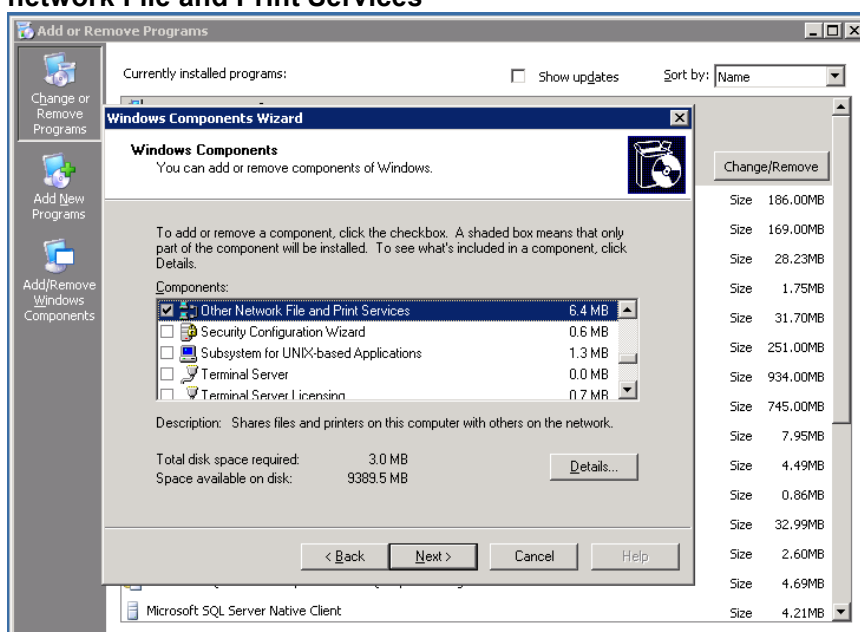


PRINTING VIA LPD (LINE PRINTER DAEMON) - PART I:

This first part covers specifically how to enable the LPD service within Windows. This varies slightly between operating system. The below steps specifically apply to various server operating systems.

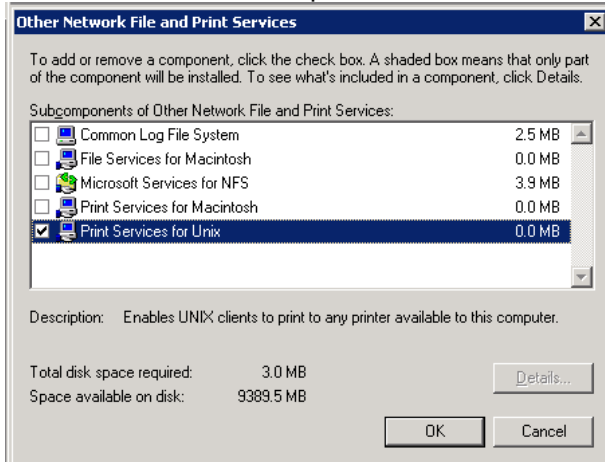
Configuring your Windows Server to provide LPD Printing Services (Windows 2000 / 2003 / XP):

1. Open Add/Remove Windows Components within Add/Remove Programs. Within this location **Other network File and Print Services**



Software Shelf International, Inc.
PO Box 7343
Menlo Park, CA 94026 USA
Phone: 650-521-5275
Sales: sales@softwareshelf.com
Support: support@softwareshelf.com

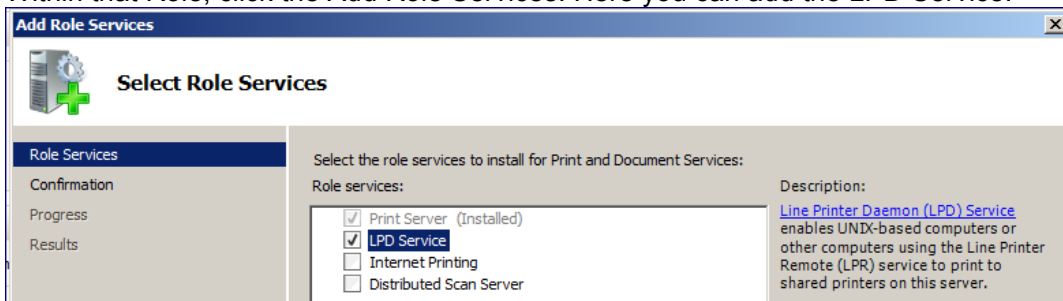
- Click on the **[Details]** button and within details check **Print Services for Unix** and click OK and then **[Next]** to install these components.



- Afterwards Windows will install this service. You may be prompted for your Windows Installation Media.

Configuring your Windows Server to provide LPD Printing Services (Windows 2008 / 2008 R2):

- Run Server manager and within Roles locate the Print and Document Services role.
- Within that Role, click the Add Role Services. Here you can add the LPD Service.



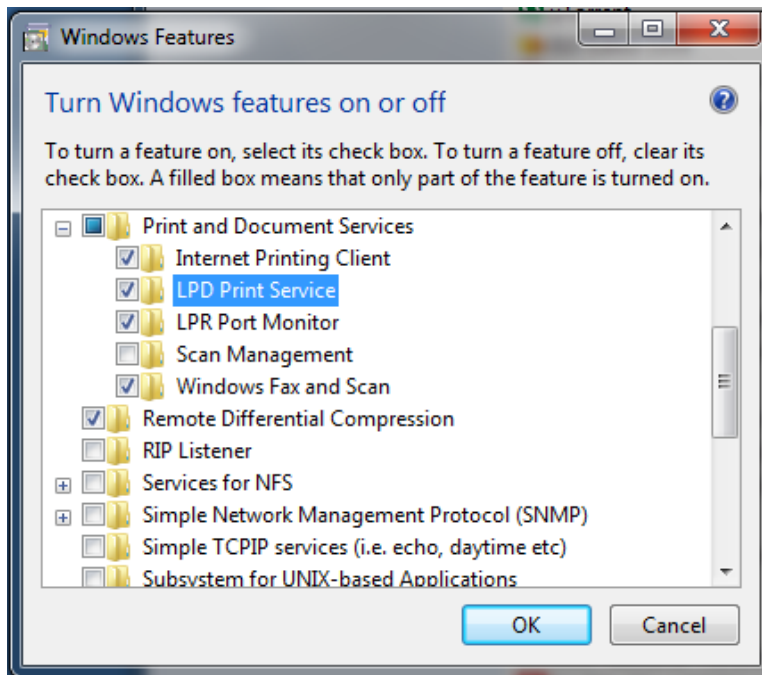
- Once the role has been installed, you are ready to install printers onto your Workstations.

Configuring your Windows Server to provide LPD Printing Services (Windows Vista / 7)

- Open **Control Panel > Programs and Features**. Within this dialog, click the **[Turn Windows Features on or off]** on the left hand side.



2. The **Windows Features** dialog will open. Locate **Print and Document Services** and enabled the item named **LPD Print Service** and then click **[OK]**



PRINTING VIA LPD (LINE PRINTER DAEMON) - PART II:

This covers the actual installation of the device on Linux. You will need the following pieces of information prior to installing the printer.

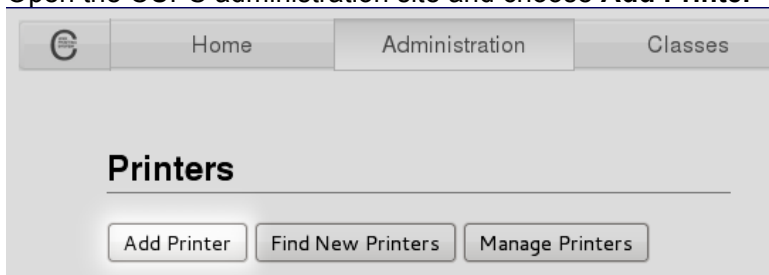
- The host name or IP address of the Windows server that you are sharing your printer from, and have installed the **LPD Printing Server / Print Services for Unix** on.
- The share name of the printer you wish to install. It is recommended that the printer not contain any spaces in its share name.

[Adding an LPD Printer using CUPS Web UI:](#)



Software Shelf International, Inc.
PO Box 7343
Menlo Park, CA 94026 USA
Phone: 650-521-5275
Sales: sales@softwareshelf.com
Support: support@softwareshelf.com

1. Open the CUPS administration site and choose **Add Printer**



2. Next you will be prompted to choose the type of printing. Here you will want to choose **LPD/LPR Host or Printer**.
In some situations you may encounter needing to directly enter a device URI. In this case skip ahead to step 3.

Add Printer

Local Printers:

- SCSI Printer
- Serial Port #1
- Serial Port #2
- LPT #1
- HP Printer (HPLIP)
- HP Fax (HPLIP)

Discovered Network Printers:

Other Network Printers:

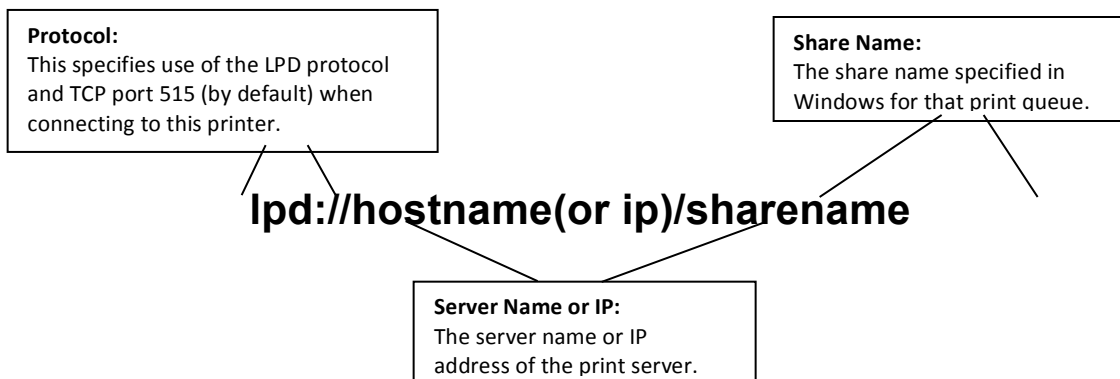
- Windows Printer via SAMBA
- Internet Printing Protocol (https)
- AppSocket/HP JetDirect
- LPD/LPR Host or Printer
- Internet Printing Protocol (ipp)
- Internet Printing Protocol (http)
- Backend Error Handler

3. Now you will need to enter a properly formatted *Device URI to connect to your shared printer. The below explains each part for an LPD Printer.



*Device URI:

This is a **Universal Resource Identifier** that is a string used to indicate the protocol, device, and other settings associated with a printer connection when using CUPS.



Final String entered into the CUPS Add Printer Wizard:

Add Printer

Connection:

Windows Firewall Warning:

By default the Windows Firewall will block LPD printing. This traffic can typically be enabled by allowing incoming connections on TCP Port 515. It is recommended that care is used when opening this port; connections should only be allowed from the subnets with Linux and other systems that require this method of printing.

4. After specifying the Device URI, you will need to name your printer. This is how end users will see this device in their printer list.



Add Printer

Name:
(May contain any printable characters except "/", "#", and space)

Description:
(Human-readable description such as "HP LaserJet with Duplexer")

Location:
(Human-readable location such as "Lab 1")

Connection:

Sharing: Share This Printer

5. Selecting a driver will be your next step. Most printers that have been out for a while provide a very good choice of drivers. If your Linux distribution does not seem to include the drivers for your device that you need, please take a look at the section labeled **Obtaining Linux Drivers** to get access to an appropriate PPD (Postscript Printer Description) file.

Add Printer

Name: MainLaserJet
Description: Black and White Laser
Location:
Connection: lpd://servername/hp4050
Sharing: Do Not Share This Printer

Make: HP

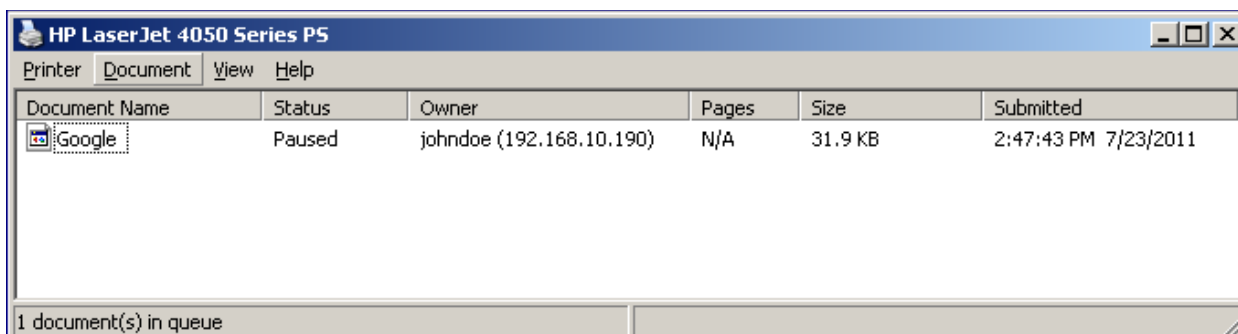
Model:
HP LaserJet 4000 Series pcl3, hpcups 3.11.5 (en)
HP LaserJet 4000 Series Postscript (en, da, de, es, fi, fr, it, ja, ko, nl, nb, pt, sv, zh_CN, zh_TW)
HP LaserJet 4050 - CUPS+Gutenprint v5.2.7 (en)
HP LaserJet 4050 - CUPS+Gutenprint v5.2.7 Simplified (en)
HP LaserJet 4050 Foomatic/lj4dith (en)
HP LaserJet 4050 Foomatic/lj5gray (en)
HP LaserJet 4050 Foomatic/ljet4 (en)
HP LaserJet 4050 Foomatic/Postscript (en)
HP LaserJet 4050 Foomatic/pxlmono (en)
HP LaserJet 4050 Series basic pcl3 3.11.5 (en)

Or Provide a PPD File:

6. Once the printer is added, it should be selectable in applications. When viewing the queue in Windows, the job's owner will list as the user logged into Linux at the time or printing, combine with the source IP.



Software Shelf International, Inc.
PO Box 7343
Menlo Park, CA 94026 USA
Phone: 650-521-5275
Sales: sales@softwareshelf.com
Support: support@softwareshelf.com



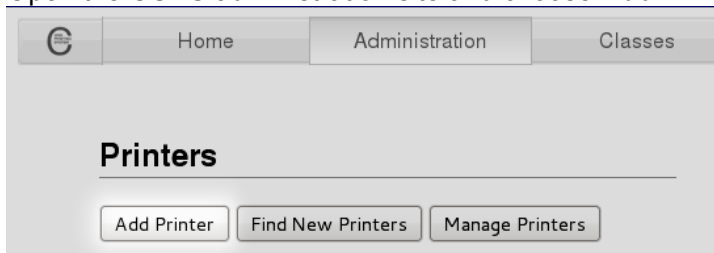
PRINTING VIA SMB (WINDOWS FILE & PRINT SHARING)

This covers the actual installation of the device on Linux using simply the sharing. It does not require the **LPD Printing Service / Print Services for Unix** be installed on your Windows Server. You will need the following pieces of information prior to installing the printer.

- The host name or IP address of the Windows server that you are sharing your printer from.
- The Windows Domain name you will be authenticating against. (not necessary for workgroups)
- Valid Windows credentials for connecting and printing to the device. Typically these will be domain credentials, but can also be local users on the print server.
- The share name of the printer within Windows.

Installing a Printer via Windows Printer Sharing:

1. Open the CUPS administration site and choose **Add Printer**



2. Next you will be prompted to choose the type of printing. Here you will want to choose **Windows Printer via SAMBA**. In some situations you may encounter needing to directly enter a device URI. In



this case skip ahead to step 3.

Add Printer

Local Printers: SCSI Printer
 Serial Port #1
 Serial Port #2
 HP Printer (HPLIP)
 LPT #1
 HP Fax (HPLIP)

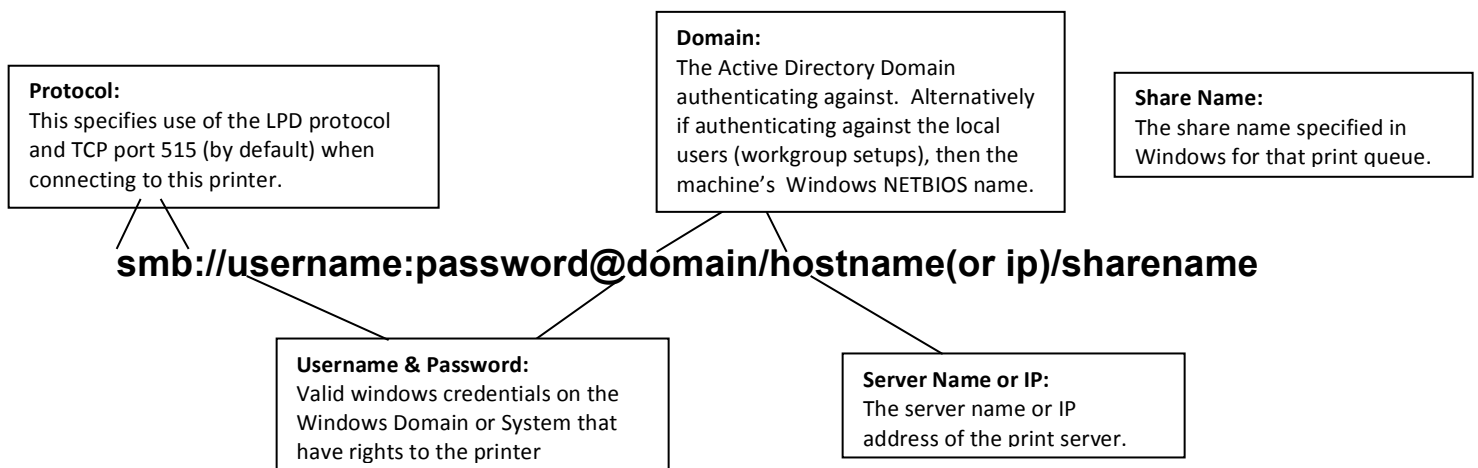
Discovered Network Printers:

Other Network Printers: Internet Printing Protocol (https)
 AppSocket/HP JetDirect
 LPD/LPR Host or Printer
 Internet Printing Protocol (ipp)
 Internet Printing Protocol (http)
 Windows Printer via SAMBA
 Backend Error Handler

- Now you will need to enter a properly formatted *Device URI to connect to your shared printer. The below explains each part for an SMB share

***Device URI:**

This is a **Universal Resource Identifier** that is a string used to indicate the protocol, device, and other settings associated with a printer connection when using CUPS.



Final String entered into the CUPS Add Printer Wizard:



Add Printer

Connection:

Examples:

- After specifying the Device URI, you will need to name your printer. This is how end users will see this device in their printer list.

Add Printer

Name:
(May contain any printable characters except "/", "#", and space)

Description:
(Human-readable description such as "HP LaserJet with Duplexer")

Location:
(Human-readable location such as "Lab 1")

Connection: smb://administrator:Pass1234@MyDomain/printserver/hp4050

Sharing: Share This Printer

- Selecting a driver will be your next step. Most printers that have been out for a while provide a very good choice of drivers. If your Linux distribution does not seem to include the drivers for your device that you need, please take a look at the section labeled **Obtaining Linux Drivers** to get access to an appropriate PPD (Postscript Printer Description) file.

Add Printer

Name: BlackAndWhiteLaser_SMB

Description:

Location:

Connection: smb://administrator:Pass1234@MyDomain/printserver/hp4050

Sharing: Do Not Share This Printer

Make: HP

Model:

- HP LaserJet 4000 Series hpijs pcl3, 3.11.5 (en)
- HP LaserJet 4000 Series pcl3, hpcups 3.11.5 (en)
- HP LaserJet 4000 Series Postscript (en, da, de, es, fi, fr, it, ja, ko, nl, nb, pt, sv, zh_CN, zh_TW)
- HP LaserJet 4050 - CUPS+Gutenprint v5.2.7 (en)
- HP LaserJet 4050 - CUPS+Gutenprint v5.2.7 Simplified (en)
- HP LaserJet 4050 Foomatic/lj4dith (en)
- HP LaserJet 4050 Foomatic/lj5gray (en)
- HP LaserJet 4050 Foomatic/ljet4 (en)
- HP LaserJet 4050 Foomatic/Postscript (en)
- HP LaserJet 4050 Foomatic/pxlmono (en)

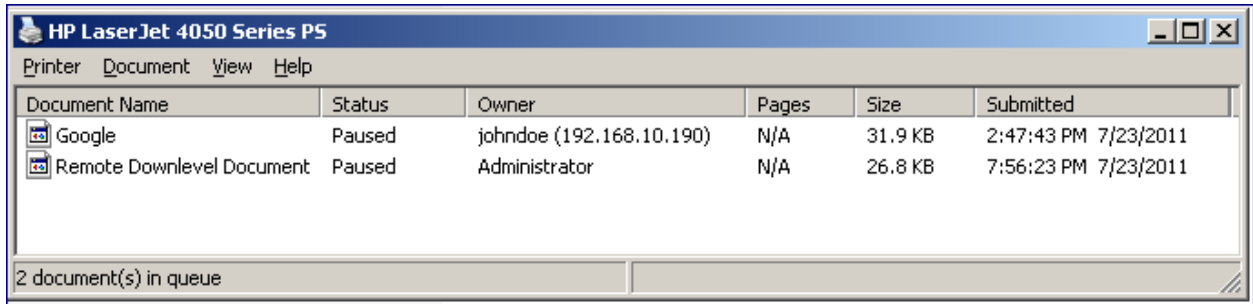
Or Provide a PPD File:



Software Shelf International, Inc.
 PO Box 7343
 Menlo Park, CA 94026 USA
 Phone: 650-521-5275
 Sales: sales@softwareshelf.com
 Support: support@softwareshelf.com

- Once the printer is added, it should be selectable in applications. When viewing the queue in Windows, the job's owner will list as the user specified in the Device URI, and not as the user logged in. Also no document title will be available.

You can see the difference between using **LPD (Job 1)** and **SAMBA (job 2)** by viewing the two jobs in the queue. Both were submitted as John Doe, but the second cannot be tracked or accounted for properly.



Document Name	Status	Owner	Pages	Size	Submitted
Google	Paused	johndoe (192.168.10.190)	N/A	31.9 KB	2:47:43 PM 7/23/2011
Remote Downlevel Document	Paused	Administrator	N/A	26.8 KB	7:56:23 PM 7/23/2011

2 document(s) in queue

OBTAINING LINUX DRIVERS

Most distributions of Linux include a rich set of drivers, especially for common printers, or printers that have been on the market for any substantial length of time. Drivers come in the form of PPD Files. Below are a few explanations on what these are and where to help find drivers.

What is the PPD File?

The PPD file, or *PostScript Printer Definition file is simply a simple text file used to invoke what features are to be enabled for a PostScript print job. Originally CUPS only support printers that could understand the PostScript printing language.

Today a large variety of printers can be supported, by enhanced filters that allow the print jobs to be translated into many other languages such as PCL and ESCP/2 to name a couple.

***PostScript** is a language, common used to describe the contents, layout, sizing, orientation and more of items on a page. It is commonly categorized as a **Page Description Language**.

Printer Manufacturer:

If your printer manufacturer provides a CUPS compatible, then this is typically the best option and will provide the most reliable output to your printer.

CUPS:

The CUPS website at www.cups.org has extensive resources and links to obtaining supported drivers for a variety of manufacturers and models.



Software Shelf International, Inc.
PO Box 7343
Menlo Park, CA 94026 USA
Phone: 650-521-5275
Sales: sales@softwareself.com
Support: support@softwareself.com

Other Sources:

There are a variety of open source groups that have helped create a large number of printer drivers which support CUPS. A few examples of places to help check for support are via:

The Linux Foundation - www.openprinting.org

Gutenprint - <http://gimp-print.sourceforge.net>



Software Shelf International, Inc.
PO Box 7343
Menlo Park, CA 94026 USA
Phone: 650-521-5275
Sales: sales@softwareshelf.com
Support: support@softwareshelf.com